

RETROFIT RoofjackRD™

Master Flash®

Features and Benefits

- Manufactured from EPDM or silicone rubber, Roofjack™ RD is compounded for maximum resistance to ozone, UV light, & temperature extremes.
- Flexible aluminum base will allow the flashing to conform to any metal roof configuration. Pipe location can be centered in the flat the panel or the rib. Urethane sealant & self-drilling screws complete the installation
- Roofjack RD are well marked so they can easily be cut with shears to fit exactly the pipe size used.
- Stainless steel teeth grip the material & secure it tightly.



	PIPE SIZE	BASE DIAMETER	COLOR MATERIAL	CARTON QUANTITY	WEIGHT PER CARTON
#1	3/4"- 2-3/4" (19 - 70 mm)	6-3/10" (160mm)	Black EPDM/ Grey EPDM/Red Silicone	15	2.5
#2	2"- 7-1/4" (50.8 - 184 mm)	10-3/4" (273.1mm)	Black EPDM/ Grey EPDM/Red Silicone	10	8.0
#3	3-1/4" - 10" (95 - 254 mm)	14-1/2" (641.4mm)	Black EPDM/ Grey EPDM/Red Silicone	10	15.5

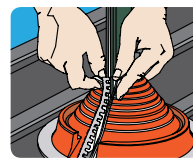
	EPDM 500	SILICONE
Advanced Ozone Resistance Tested to...	70 hr @500 pphm	70 hr @ 500 pphm
High Temperature Resistance Tested to	Intermittent Continuous	+135°C (+275°F) +100°C (+212°F)
Low Temperature Resistance tested to...	-55°C (-65°F)	-74°C (-100°F)
Tensile Set Maximum...	10MPa (1450psi)	5MPa (700psi)
Compression Set Maximum...	25%	50%



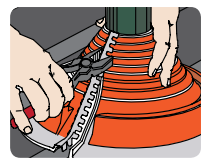
EASY INSTALLATION



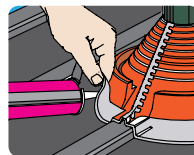
1. Using tin snips, cut the cone to fit pipe.



2. Wrap Retrofit around pipe, join the interlocking teeth.



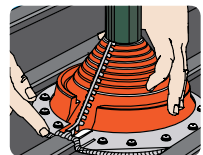
3. Squeeze jointer tightly with pliers to crimp



4. Apply sealant shape Retrofit to roof.



5. Fasten Retrofit to roof.



6. Apply additional sealant to mechanical locking jointer seam

RETROFIT RoofjackSQ™

Features and Benefits

- Manufactured from EPDM or silicone rubber, Retrofit Roofjack™ SQ is compounded for maximum resistance to ozone, UV light, & temperature extremes.
- Flexible aluminum base will allow the flashing to conform to any metal roof configuration. Pipe location can be centered in the flat the panel or the rib. Urethane sealant & self-drilling screws complete the installation
- Retrofit Roofjack™ SQ are well marked so they can easily be cut with shears to fit exactly the pipe size used.
- Retrofit Roofjack™ SQ are used in applications for which a standard flashing will not work. It wraps around the pipe instead of pulling down over the pipe Hardware is included to ensure a watertight connection.
- Fastener snaps & cable tie are included.

Master Flash®



	PIPE SIZE	BASE DIAMETER	COLOR MATERIAL	CARTON QUANTITY	WEIGHT PER CARTON
#1	1/2" - 4" (12.7 - 101.6mm)	8" - 3/16" (80.96mm)	Black EPDM/ Grey EPDM/ Red Silicone	5	2.5
#2	4" - 9-1/4" (101.6 - 135mm)	14-1/4" (361.95mm)	Black EPDM/ Grey EPDM/ Red Silicone	5	8.0
#3	9-1/4" - 16-1/4" (235 - 412.8mm)	21-1/2" (546.1mm)	Black EPDM/ Grey EPDM/ Red Silicone	5	15.5



RED SILICONE RETROFIT ROOFJACK

	EPDM 500	SILICONE
Advanced Ozone Resistance Tested to...	70 hr @500 pphm	70 hr @ 500 pphm
High Temperature Resistance Tested to	Intermittent Continuous	+135°C (+275°F) +100°C (+212°F)
Low Temperature Resistance tested to...	-55°C (-65°F)	-74°C (-100°F)
Tensile Set Maximum...	10MPa (1450psi)	5MPa (700psi)
Compression Set Maximum...	25%	50%

EASY INSTALLATION



1. Trim to Fit 2. Wrap and Snap 3. Press and Mold



4. Add Urethane Sealant. 5. Fasten 6. Install Cable Tie Sealant.

EXTREME Roofjack™

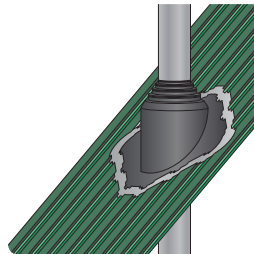
Master Flash®

Features and Benefits

- Weather resistance designed to withstand the damaging effects of ultra violet light and ozone.
- Modification made simple easy to see pipe diameters make for painless on-site customization.
- The built in 40° degree pitch allows to handle any extreme roof pitch (35° - 65°), sleeve flexibility accommodates vibration and pipe movement caused by expansion construction.
- Easy on-site customization accommodates all normal installation s.
- Adaptable Base. The base is designed to mold to most panel configuration and roof pitches regardless of pipe location.



	EPDM 500	SILICONE
Advanced Ozone Resistance Tested to...	70 hr @500 pphm	70 hr @ 500 pphm
High Temperature Resistance Tested to	Intermittent +135°C (+275°F)	+260°C (+500°F)
	Continuous +100°C (+212°F)	+225°C (+500°F)
Low Temperature Resistance tested to...	-55°C (-65°F)	-74°C (-100°F)
Tensile Set Maximum...	10MPa (1450psi)	5MPa (700psi)
Compression Set Maximum...	25%	50%



FIX-A-FLASH RoofjackSQ™

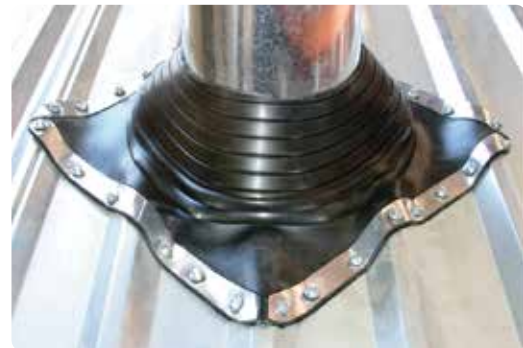
Master Flash®

Features and Benefits

- Designed for an over-sized hole, but smaller diameter pipe, over which a standard Roofjack™ will not fit.
- Manufactured from EPDM or silicone rubber, the FIX-A-FLASH™ material compound is designed for maximum resistance to ozone, UV light, & temperature extremes.
- Each FIX-A-FLASH is well marked with pipe sizes, so it can be easily cut to properly conform to the pipe size used.
- FIX-A-FLASH have a flexible aluminum band that will conform to any metal roof configuration.



PIPE SIZE	BASE DIAMETER	COLOR MATERIAL	CARTON QUANTITY	WEIGHT PER CARTON
6-3/4" - 15" (171-381mm)	19-1/2" (495mm) Base	Black/Gray EPDM & Red Silicone	5	15
0" - 15" (0-381mm)	19-1/2" (495mm) Base	Black/Gray EPDM & Red Silicone	5	15



	EPDM 500	SILICONE
Advanced Ozone Resistance Tested to...	70 hr @500 pphm	70 hr @ 500 pphm
High Temperature Resistance Tested to	Intermittent Continuous	+135°C (+275°F) +100°C (+212°F)
Low Temperature Resistance tested to...	-55°C (-65°F)	-74°C (-100°F)
Tensile Set Maximum...	10MPa (1450psi)	5MPa (700psi)
Compression Set Maximum...	25%	50%