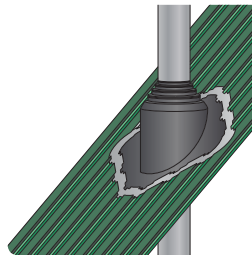


Extreme Angle Master Flash®

Features and Benefits

- Weather resistance designed to withstand the damaging effects of ultra violet light and ozone.
- Modification made simple easy to see pipe diameters make for painless on-site customization.
- The built in 40° degree pitch allows to handle any extreme roof pitch (35° - 65°), sleeve flexibility accommodates vibration and pipe movement caused by expansion contraction.
- Easy on-site customization accommodates all normal installation s.
- Adaptable Base. The base is designed to mold to most panel configuration and roof pitches regardless of pipe location.



	PIPE SIZE	BASE DIAMETER	COLOR MATERIAL
#1	Closed - 5-3/4" (0 - 146mm)	1" (279mm)	Black EPDM/ Grey Silicone/ Red Silicone
#2	4" - 8" (101 - 203mm)	14-1/4" (362mm)	Black EPDM/ Grey Silicone/ Red Silicone

	EPDM 500	SILICONE
Advanced Ozone Resistance Tested to...	70 hr @500 pphm	70 hr @ 500 pphm
High Temperature Resistance Tested to...		
Intermittent	+135°C (+275°F)	+260°C (+500°F)
Continuous	+100°C (+212°F)	+225°C (+500°F)
Low Temperature Resistance Tested to...	-55°C (-65°F)	-74°C (-100°F)
Tensile Set Maximum...	10MPa (1450psi)	5MPa (700psi)
Compression Set Maximum...	25%	50%

6357 Reynolds Road Tyler, Texas 75708 | P.O. Box 4515, Tyler, Texas 75712 | 800-352-4864 | 800-352-3940 Fax
 9950 Princeton Glendale Rd. Cincinnati, OH 45246 | 800-944-8920 | 800-352-3940 Fax
 Copyright 2017 © ST Fastening Systems, Division of The Hillman Group. All rights reserved.

