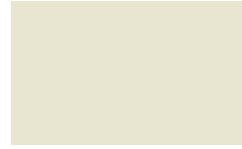




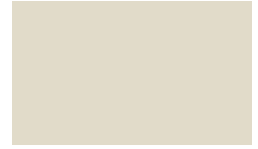
PAC-CLAD®

P E T E R S E N

A **CARLISLE** COMPANY



▲ ALMOND



▲ SANDSTONE



▲ AGED BRONZE



▲ DARK BRONZE



MIDNIGHT BRONZE



▲ MANSARD BROWN



▲ MUSKET GRAY



▲ CHARCOAL



ONYX (fka Matte Black)



TRADITIONAL BLACK



BURGUNDY



▲ CARDINAL RED



BERKSHIRE BLUE



AWARD BLUE



FOREST GREEN



▲ EVERGREEN



HARTFORD GREEN

Color Guide

Premium Colors



●▲👑\$\$ ANODIC CLEAR



●▲👑\$\$ SILVERSMITH



●▲👑\$ SILVER



●▲👑\$ CHAMPAGNE



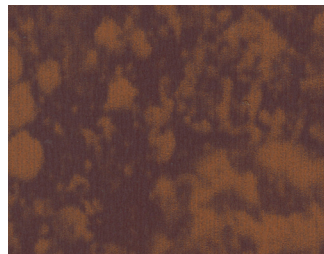
●▲👑\$ ZINC



●▲👑\$ WEATHERED ZINC



●▲👑\$ COPPER PENNY



👑\$\$ WEATHERED STEEL

70% polyvinylidene fluoride (PVDF) pre-finished steel and aluminum for roofing, curtainwall and storefront applications.

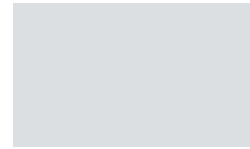
● Metallic Colors \$ Pricing ▲ Cool Colors 👑 Premium Colors

See back for color performance and availability chart.

Standard Colors



▲ BONE WHITE



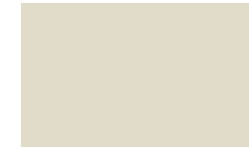
▲ REGAL WHITE



▲ STONE WHITE



▲ ALMOND



▲ SANDSTONE



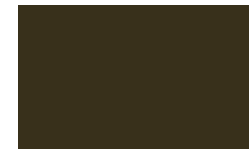
▲ SIERRA TAN



▲ BUCKSKIN



▲ MEDIUM BRONZE



▲ AGED BRONZE



▲ DARK BRONZE



▲ BURNISHED SLATE



▲ ANTIQUE BRONZE



▲ CLASSIC BRONZE



▲ MIDNIGHT BRONZE



▲ MANSARD BROWN



▲ GRANITE



▲ CITYSCAPE



▲ SLATE GRAY



▲ MUSKET GRAY



▲ CHARCOAL



▲ GRAPHITE



▲ IRON ORE



▲ INKWELL



▲ ONYX (fka Matte Black)



▲ TRADITIONAL BLACK



▲ BLACK (fka Black Aluminum)



▲ TERRA COTTA



▲ COLONIAL RED



▲ BURGUNDY



▲ CARDINAL RED



▲ MILITARY BLUE



▲ PACIFIC BLUE (fka Slate Blue)



▲ INTERSTATE BLUE



▲ BERKSHIRE BLUE



▲ AWARD BLUE



▲ TEAL



▲ HEMLOCK GREEN



▲ PATINA GREEN



▲ FOREST GREEN



▲ EVERGREEN



▲ HARTFORD GREEN



IL: 800 PAC CLAD TX: 800 441 8661 MD: 800 344 1400
AZ: 833 750 1935 GA: 800 272 4482 WA: 833 750 1935

PAC-CLAD.COM

Performance and Availability

PAC-CLAD STANDARD COLORS	REFLECTIVITY	EMISSIVITY	3 YEAR EXPOSURE	SRI	STEEL			ALUMINUM				20-IN. COIL	
					24 GA.	22 GA.	.032	.040	.050	.063	24 GA.	.032	
AGED BRONZE	0.29	0.87	0.27	29	✓							✓	
ALMOND	0.56	0.86	0.55	65	✓	✓	✓	✓	✓				
ANTIQUE BRONZE NEW	0.28	0.86	N/A	27	✓		✓	✓				✓	✓
AWARD BLUE †	0.24	0.86	0.23	22	✓		✓						
BERKSHIRE BLUE *	0.30	0.87	0.27	31	✓								
BLACK (FKA BLACK ALUMINUM)	0.04	0.89	0.04	-2	✓	✓	✓	✓	✓	✓		✓	✓
BONE WHITE	0.70	0.86	0.69	85	✓	✓	✓	✓	✓	✓		✓	✓
BUCKSKIN NEW	0.37	0.86	N/A	39	✓		✓					✓	✓
BURGUNDY	0.14	0.85	0.13	9	✓							✓	
BURNISHED SLATE	0.32	0.87	0.31	33	✓							✓	
CARDINAL RED †	0.44	0.86	0.44	49	✓		✓					✓	✓
CHARCOAL	0.30	0.86	0.30	30	✓		✓	✓	✓			✓	✓
CITYSCAPE	0.49	0.86	0.50	56	✓	✓	✓	✓	✓			✓	✓
CLASSIC BRONZE * NEW	0.29	0.86	N/A	29	✓							✓	
COLONIAL RED	0.31	0.86	0.31	31	✓		✓	✓	✓			✓	✓
DARK BRONZE	0.29	0.86	0.29	29	✓	✓	✓	✓	✓	✓		✓	✓
EVERGREEN	0.28	0.86	0.26	27	✓								
FOREST GREEN	0.10	0.86	0.10	4	✓		✓	✓				✓	✓
GRANITE *	0.33	0.87	0.33	34	✓	✓	✓	✓	✓				✓
GRAPHITE	0.29	0.87	0.28	29	✓							✓	
HARTFORD GREEN	0.08	0.88	0.08	3	✓			✓				✓	
HEMLOCK GREEN	0.31	0.87	0.30	32	✓		✓					✓	
INKWELL * NEW	0.26	0.87	N/A	25	✓							✓	
INTERSTATE BLUE	0.16	0.87	0.15	12	✓		✓		✓			✓	✓
IRON ORE NEW	0.27	0.87	N/A	27	✓		✓	✓	✓			✓	✓
MANSARD BROWN	0.31	0.86	0.31	31	✓	✓	✓	✓	✓			✓	✓
ONYX (fka MATTE BLACK STEEL)	0.26	0.86	0.25	25	✓	✓						✓	
MEDIUM BRONZE	0.30	0.87	0.29	31	✓	✓	✓	✓	✓	✓		✓	✓
MIDNIGHT BRONZE	0.06	0.87	0.06	0	✓			✓				✓	
MILITARY BLUE	0.31	0.86	0.30	31	✓		✓					✓	✓
MUSKET GRAY	0.32	0.86	0.31	33	✓	✓	✓		✓			✓	✓
PACIFIC BLUE (fka SLATE BLUE)	0.28	0.86	0.27	27	✓		✓					✓	✓
PATINA GREEN	0.33	0.86	0.32	34	✓								
REGAL WHITE NEW	0.67	0.85	N/A	80	✓		✓	✓				✓	✓
SANDSTONE	0.48	0.86	0.48	54	✓	✓	✓	✓	✓	✓			
SIERRA TAN	0.32	0.82	0.31	31	✓	✓	✓	✓	✓			✓	✓
SLATE GRAY	0.38	0.86	0.37	41	✓	✓	✓	✓	✓			✓	✓
STONE WHITE	0.69	0.86	0.67	84	✓	✓	✓	✓	✓	✓			
TEAL	0.32	0.86	0.32	33	✓		✓						
TERRA COTTA	0.34	0.87	0.33	36	✓		✓		✓			✓	✓
TRADITIONAL BLACK * NEW	0.29	0.86	N/A	29	✓		✓					✓	✓
PAC-CLAD PREMIUM COLORS													
ANODIC CLEAR	0.32	0.83	0.31	31				✓					
CHAMPAGNE	0.50	0.85	0.49	57	✓		✓	✓	✓				✓
COPPER PENNY	0.52	0.81	0.52	58	✓		✓	✓				✓	✓
SILVER	0.47	0.87	0.46	53	✓	✓	✓	✓	✓			✓	✓
SILVERSMITH	0.32	0.88	0.32	34				✓					
WEATHERED STEEL	0.32	0.89	N/A	34	✓								
WEATHERED ZINC	0.48	0.82	0.46	53	✓	✓	✓		✓			✓	✓
ZINC	0.42	0.82	0.38	45	✓		✓	✓					✓
CLEAR-COAT ACRYLIC FINISH (NON-PVDF)													
GALVALUME PLUS	0.68	0.14	0.55	57	✓	✓						✓	

PAC-CLAD Premium finishes are available from stock at a moderate extra cost. PAC-CLAD Copper Penny is a Non-Weathering finish. Solar Reflectance Index calculated according to ASTM E-1980.

* Low Gloss/Low Sheen, 70% PVDF finish † 10-year finish warranty

TECHNICAL DATA FOR 70% PVDF COATING:

- ▶ South Florida Exposure: Color (ASTM D 2244) - No more than 5ΔE Hunter units at 20 years; Chalk (ASTM D 4214) - Rating no less than 8 at 20 years; Film integrity - 20 years.
- ▶ Accelerated Weathering (ASTM D 4587, ASTM G 154): 5000 Hours; Chalk, per ASTM D 4214, rating of 6 or better; Color, per ASTM D 2244, < 5ΔE (Hunter Units) color change.
- ▶ Chemical/Acid Pollution Resistance (ASTM D 1308): Pass

- ▶ T-Bend (ASTM D 4145): 1T - 3T with no loss of adhesion
- ▶ Humidity Resistance (ASTM D 2247): Galvalume or HDG, 100% RH, 2000 hours - No field blisters; Aluminum, 100% RH, 3000 hours - No field blisters
- ▶ Salt Spray Resistance (ASTM B 117): Aluminum: 3000 hours, creep from scribe no more than 1/16" (2mm), no field blisters. Galvalume or HDG: 2000 hours, creep from scribe no more than 1/8" (4mm), no field blisters

- ▶ Pencil hardness (ASTM D 3363): HB - 2H
- ▶ Specular Gloss (ASTM D 523) @ 60 degrees: Typical - 20 - 35
- ▶ Abrasion Resistance (ASTM D 969): 80 Liters/Mil +/- 5 Liters
- ▶ Cross Hatch Adhesion (ASTM D 3359): No loss of adhesion
- ▶ Reverse Impact (ASTM D 2794): Galvalume or HDG, 2x metal thickness inch-pounds, no loss of adhesion; Aluminum, 1.5x metal thickness inch-pounds, no loss of adhesion
- ▶ Flame Test (ASTM E 84): Class A Coating

PAC-CLAD® is a registered trademark of Petersen Aluminum Corp. The PAC-CLAD finish is 70% polyvinylidene fluoride (PVDF). Galvalume Plus is a registered trademark of BIEC International. 8/24

SAP 614844