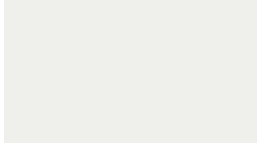


PVDF Durapon 70® (Kynar 500® or Hylar 5000®)  
(Polyvinylidene fluoride)

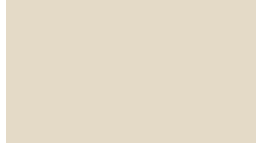
## Standard Premium Colors

For 24ga Selection, please refer to 24ga Color Guide

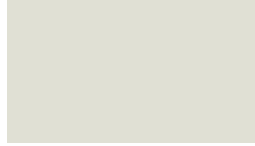
Printed colors may vary from actual product. Metal samples available upon request. Please inquire for metal type, gauge, color, availability & lead times.



BONE WHITE



ALMOND



SANDSTONE



SLATE GRAY



CHARCOAL GRAY



DEEP BLACK



MATTE BLACK



MANSARD BROWN



MEDIUM BRONZE



DARK BRONZE

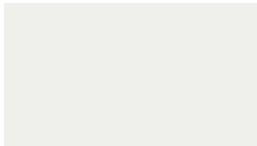


HARTFORD GREEN

Many More Colors & Custom Colors Available



## Select Colors



POLAR WHITE



DOVE GRAY



SURREY BEIGE



RUSTIC RED



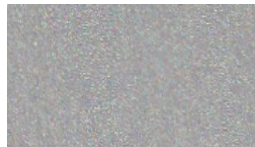
SHERWOOD GREEN



DARK IVY



REGAL BLUE



BRIGHT SILVER

## Non-Painted



GALVALUME® PLUS\*\*  
(acrylic coated)



GALVANIZED\*\*

**UP TO 40 YEAR**  
LIMITED PAINT WARRANTY



-Steel Substrate Grade D (yield strength of 50,000 psi) & Grade E (yield strength of 80,000 psi)  
-Substrate Coatings - Galvalume® AZ50, AZ55, AZ60, AZ70 & Galvanized G40, G60, G90, G100.  
-Protective film must be removed immediately after installation.  
-Due to product advancements, changes and other factors, we reserve the right to modify or delete the information herein without prior notice.  
-Galvalume® is a registered trademark of BEIC International, Inc.

-Durapon 70® is a registered trademark of Dura Coat Products, Inc.  
-Dura Coat® is a registered trademark of Dura Coat Products, Inc.  
-Teflon® is a registered trademark of The Chemours Company FC, LLC.  
-Fluoropon® is a trademark of The Sherwin-Williams Company.  
-Kynar 500® is a registered trademark of Arkema, Inc.  
-Hylar 5000® is a registered trademark of Solvay Solexis, Inc.

-Sherwin-Williams® is a registered trademark of The Sherwin-Williams Company.  
\*Metallic are batch sensitive & therefore variations are very common and expected to vary.

-Not all products listed offer 35 year paint warranty and warranties vary.  
\*\*Not all products listed offer 40 year warranty and warranties vary.  
-Oil Canning is not a cause for rejection. See oil canning disclaimer.

Panel Selection

Many more metal types, gauges, colors & widths not listed below are available.

	Almond	Bone White	Bright Silver	Charcoal Gray	Dark Bronze	Dark Ivy	Deep Black	Dove Gray	Galvalume®	Galvanized	Hartford Green	Mansard Brown	Matte Black	Medium Bronze	Regal Blue	Rustic Red	Polar White	Sandstone	Sherwood Green	Slate Gray	Surrey Beige	
1/2" Corrugated Maxx™ Roof Panel	●	●	●	●	●	●	●	●	●	●	●	●	●	●	●	●	●	●	●	●	●	●
1/2" Corrugated Maxx™ Wall Panel	●	●	●	●	●	●	●	●	●	●	●	●	●	●	●	●	●	●	●	●	●	●
7/8" Corrugated Maxx™ Roof Panel	●	●	●	●	●	●	●	●	●	●	●	●	●	●	●	●	●	●	●	●	●	●
7/8" Corrugated Maxx™ Wall Panel	●	●	●	●	●	●	●	●	●	●	●	●	●	●	●	●	●	●	●	●	●	●
PBRPlusX™ Panel	●	●	●	●	●	●	●	●	●	●	●	●	●	●	●	●	●	●	●	●	●	●
Inverted R Panel SLW™	●	●	●	●	●	●	●	●	●	●	●	●	●	●	●	●	●	●	●	●	●	●
7.2 PlusX™ Panel	●	●	●	●	●	●	●	●	●	●	●	●	●	●	●	●	●	●	●	●	●	●
Rapid Snap NS100™ 11.75" Coverage	●	●	●	●	●	●	●	●	●	●	●	●	●	●	●	●	●	●	●	●	●	●
Rapid Snap NS100™ 15.75" Coverage	●	●	●	●	●	●	●	●	●	●	●	●	●	●	●	●	●	●	●	●	●	●
Rapid Snap NS100™ 19.75" Coverage	●	●	●	●	●	●	●	●	●	●	●	●	●	●	●	●	●	●	●	●	●	●
Rapid Snap NS150™ 10.75" Coverage	●	●	●	●	●	●	●	●	●	●	●	●	●	●	●	●	●	●	●	●	●	●
Rapid Snap NS150™ 14.75" Coverage	●	●	●	●	●	●	●	●	●	●	●	●	●	●	●	●	●	●	●	●	●	●
Rapid Snap NS150™ 18.75" Coverage	●	●	●	●	●	●	●	●	●	●	●	●	●	●	●	●	●	●	●	●	●	●
Sure Snap SL100™ 12.875" Coverage	●	●	●	●	●	●	●	●	●	●	●	●	●	●	●	●	●	●	●	●	●	●
Sure Snap SL100™ 16.875" Coverage	●	●	●	●	●	●	●	●	●	●	●	●	●	●	●	●	●	●	●	●	●	●
Sure Snap SL100™ 20.875" Coverage	●	●	●	●	●	●	●	●	●	●	●	●	●	●	●	●	●	●	●	●	●	●
Sure Snap SL150™ 10.75" Coverage	●	●	●	●	●	●	●	●	●	●	●	●	●	●	●	●	●	●	●	●	●	●
Sure Snap SL150™ 14.75" Coverage	●	●	●	●	●	●	●	●	●	●	●	●	●	●	●	●	●	●	●	●	●	●
Sure Snap SL150™ 18.75" Coverage	●	●	●	●	●	●	●	●	●	●	●	●	●	●	●	●	●	●	●	●	●	●
Sure Snap SL175 HD™ 14" Coverage (Structural)	●	●	●	●	●	●	●	●	●	●	●	●	●	●	●	●	●	●	●	●	●	●
Sure Snap SL175 HD™ 18" Coverage (Structural)	●	●	●	●	●	●	●	●	●	●	●	●	●	●	●	●	●	●	●	●	●	●
Sure Lock ML100™ 12.625" Coverage	●	●	●	●	●	●	●	●	●	●	●	●	●	●	●	●	●	●	●	●	●	●
Sure Lock ML100™ 16.625" Coverage	●	●	●	●	●	●	●	●	●	●	●	●	●	●	●	●	●	●	●	●	●	●
Sure Lock ML100™ 20.625" Coverage	●	●	●	●	●	●	●	●	●	●	●	●	●	●	●	●	●	●	●	●	●	●
Sure Lock ML150™ 11.75" Coverage	●	●	●	●	●	●	●	●	●	●	●	●	●	●	●	●	●	●	●	●	●	●
Sure Lock ML150™ 15.75" Coverage	●	●	●	●	●	●	●	●	●	●	●	●	●	●	●	●	●	●	●	●	●	●
Sure Lock ML150™ 19.75" Coverage	●	●	●	●	●	●	●	●	●	●	●	●	●	●	●	●	●	●	●	●	●	●
Sure Lock ML200 HD™ 14.25" Coverage (Structural)	●	●	●	●	●	●	●	●	●	●	●	●	●	●	●	●	●	●	●	●	●	●
Sure Lock ML200 HD™ 18.25" Coverage (Structural)	●	●	●	●	●	●	●	●	●	●	●	●	●	●	●	●	●	●	●	●	●	●
FlushX™ Panel 8", 12", 16", 20"	●	●	●	●	●	●	●	●	●	●	●	●	●	●	●	●	●	●	●	●	●	●
Reveal FlushX™ 8", 12", 16", 20"	●	●	●	●	●	●	●	●	●	●	●	●	●	●	●	●	●	●	●	●	●	●
Slat Wall InfinityX™ 7", 8", 10", 12"	●	●	●	●	●	●	●	●	●	●	●	●	●	●	●	●	●	●	●	●	●	●
Sure Grip Board & Batten HD™	●	●	●	●	●	●	●	●	●	●	●	●	●	●	●	●	●	●	●	●	●	●
Board & Batten™	●	●	●	●	●	●	●	●	●	●	●	●	●	●	●	●	●	●	●	●	●	●

● Standard Colors Available.  
 ● Standard Colors available at this width at an increased cost, due to drop waste.  
 ● Available at this width at an increased cost, due to drop waste.

- \*\*Actual coverage may vary slightly due to the characteristics of the steel.
- Please inquire for metal type, gauge, color, availability and lead times.
- Protective film must be removed immediately after installation.
- Please see product specification sheet for more details.
- Oil Canning is not a cause for rejection.
- Profiles are not to scale.

Toll-Free: (877) 95-STEEL  
 Call or Text: (208) 745-1500  
 Email: sales@briggssteel.com  
 Fax: (208) 745-0675

www.BriggsSteel.com  
 4056 E 300 N  
 Rigby, Idaho 83442

